

Evolution of the Living Energy System

Laverne E. Denyer



HISTORICAL PERSPECTIVE

A comparative overview of how the Living Energy Systems (LES) and their evolution over time can help us understand how we became what we are today. As with any map, it is wise to know where we have been as well as where we currently are for reference points. Identifying reference points helps us enjoy the journey along the way and makes it easier to effectively plan where we are going.

The structures of the systems and subsystems within the LES change over time, in direct relationship to our changing needs and awareness. Change is an integral part of the evolutionary process itself. We are no exception.

For millennia, people have been creating their own picture-maps of the Living Energy System as they perceive it at the time. When you compare these drawings and descriptions you realize that as the LES evolves, the drawings evolve.

Scientists have been mapping body systems for centuries. Anatomy, physiology, and biology are all studies which have aided in understanding how our physical bodies work. My studies have used similar procedures, noting changes over time. I just happen to be mapping and describing the subtle energy systems associated with our living bodies and consciousness. Think of my work as an updated User's Guide, or Owner's Manual long overdue in the printing.

RESEARCHERS REPORT WHAT THEY FIND

When I started noticing differences between the various interpretations and what I was finding, it confused me and sometimes made me question what I saw. Then the "duh!" moment arrived when I understood one of the major reasons why this was happening. The researchers were not just getting smarter and being able to "see" new aspects of the LES. They were reporting on our own evolution.

This is when I realized that most researchers and artists dealing with this subject matter are quite literal and functional in illustrating what they see, hear or feel. They do not tend to take great creative license in their interpretations. They are sincere in their efforts to communicate by clearly and accurately drawing their perceptions. Although the symbols often vary according to the spiritual and philosophical environments of the researchers, what is represented is actually quite literal.

This notion of literal representation used to bother me when I looked at various energy maps created by others. What bothered me were the differences between former drawings and my own perceptions. I found it difficult to figure out how it all fit together into a clear pattern. Perhaps you have had some of the same difficulties. Being eternally curious and somewhat logical, I sought answers to this dilemma.

COMPLEXITY INCREASES OVER TIME

I began to pay attention to timelines in relationships to these energy maps. I discovered that earlier representations were generally not as complex as "modern" perceptions – kind of like early geographical maps that began with simple pathways and are evolving into complex highway systems. Early LES system maps were pretty simple, meeting the needs of people of the time. As time went on, more details began to emerge. My own perceptions suggested that there were even more details than indicated in any of the earlier drawings. I also found that some structures were actually drawn differently at different times. A prime example of this is the general structure of the chakras.

Finally, I realized that it wasn't a case of misperceptions or overlooking aspects of the systems. I eventually realized that something was evolving. At first, living in my own egotism, I believed that the early artists probably had limited perceptions. Yeah! Right! I knew better than my predecessors! Perhaps they just did not see the complexities in full detail. My early thought was that the more often people looked at the energy systems, the more details they identified. That seemed plausible at first. It fit the

modern scientific notion, and I was temporarily satisfied, even a little proud of myself for paying attention so well.

That still left me with serious problems when I looked at the brilliant work done by people like Bessant, Leadbeater and Babbitt. They were so adept at discerning minute details that I simply could not believe that they could miss so much. So I grew up a little and realized that there must be another explanation.

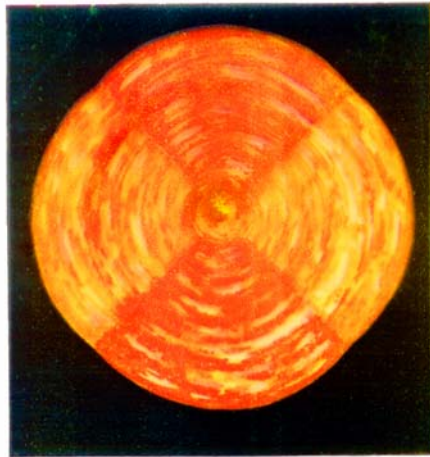
Finally, I realized that earlier researchers depicted the energy systems as they were at the time of observation. A big “duh” moment that one was! How could I have been so arrogant and naive at the same time? The thing that was changing was the Living Energy System itself, not our perceptions of it. We, as energetic beings, have been evolving for a long, long time. As we evolved, subtle differences could be discerned. Those differences began to reveal themselves in the pictures drawn by different researchers over time.

Not only are we learning how to better distinguish the details, but the details themselves are evolving. It just takes setting aside ego and preconceived notions to see the truth. It is just so simple and elegant!

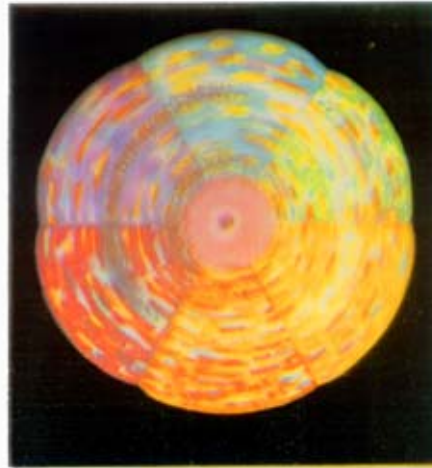
FOR EXAMPLE THE CHAKRAS

A powerful example of evolution is the shape of the chakras, or concentrated energy centers within the body. Early drawings depicted these energy centers as flower-like shapes. They had petals that unfolded as the center matured, like budding flowers. Chakras were often compared to lotus blossoms. An individual chakra could be a new

bud with little energy flowing through it. Or it could be a matured flower with all of its petals open. The open position allowed the full energetic potentials to flow through. The following illustrations from *Djwal Kul Intermediate Studies of the Human Aura* (Prophet, 1974) show the increasing complexity of the chakras from the base of the spine to the top of the head. Note how the root chakra has 4 “petals” while the crown chakra has 996 (no you don’t need to count them, that is the commonly agreed upon number).



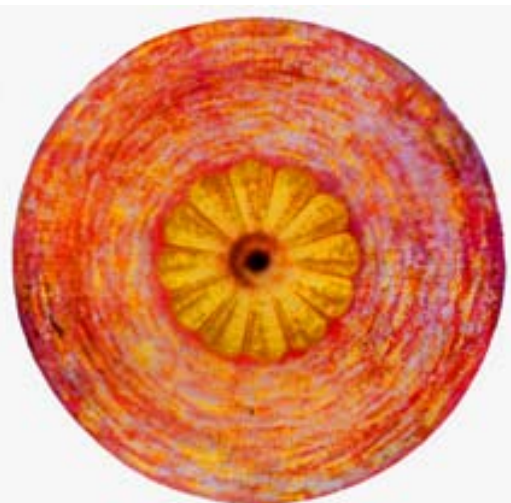
THE ROOT CHAKRA



THE SPLEEN CHAKRA



THE BROW CHAKRA

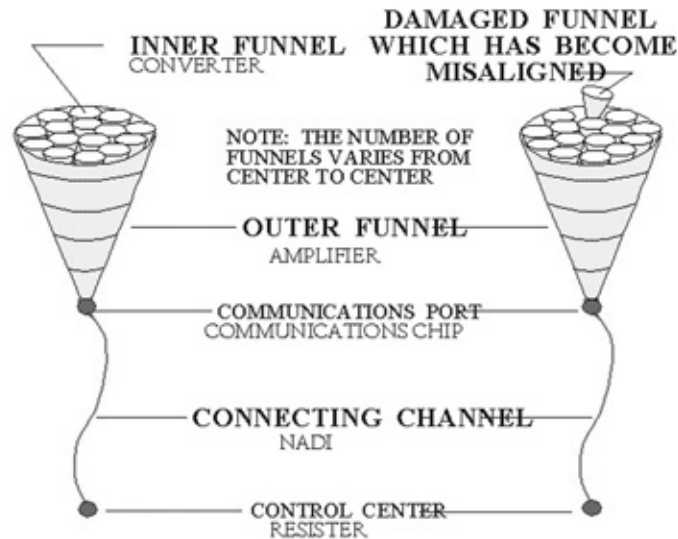


The Crown Chakra

What I was observing and interacting with in my own practice was different. I saw the centers as more funnel-like. What I felt and saw did not fit the prevailing concepts. That bothered me for many years. Since the late 1970's, I had been drawing them as funnels. My sense of vague discomfort was because my ideas were so different from the rest.

CHAKRA DESIGN

HEALTHY CHAKRA DAMAGED CHAKRA



FORMER CONCEPT OF CHAKRAS



©1991, 1993 - L.E. DENYER

Then one day one of my students showed me Barbara Brennan's book, *Hands of Light*. He was impressed with the similarities between her work and mine. Frankly, so

was I. Finally someone drew the centers the same way I saw them! I realized that the reason was because she was more contemporary in her work, and was drawing the energy systems of today, not what they used to be. That was why our work seemed so similar. It was a breakthrough moment for me, a turning point in my thinking. I began to realize that it must be a change in the structure itself, not a difference in attention to details.

I was overjoyed, and frankly humbled and chagrined. It finally made sense. Change was the determining factor. I began to discover that there was continual change in what was happening within the body and in the energy systems. New centers had evolved. Some of the older centers began to show subtle changes.

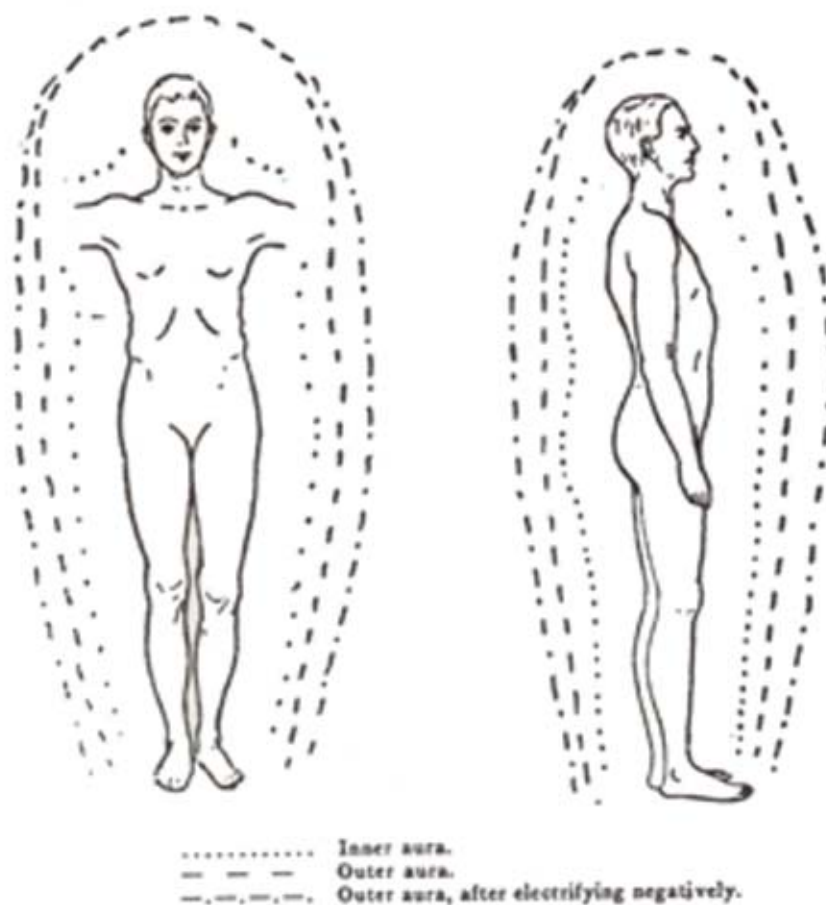
That discovery of the evolutionary nature of the LES led me to investigate how the systems evolved with time.

THE AURA PATTERNS ALSO EVOLVE

So now I had begun to look at the systems with a different eye. If the chakras were evolving, it was a logical leap to presume that other aspects of the LES were evolving as well. So I focused my attention differently and stayed open to the differences and the purposes of those differences.

It is again so simple and elegant. The structure of the subtle energy body systems around and throughout the physical body changes as we evolve into higher energy beings. At one time, all of these bodies were lumped into a single structure called the *Aura*. Early artists represented it as having two or three layers to it. Today

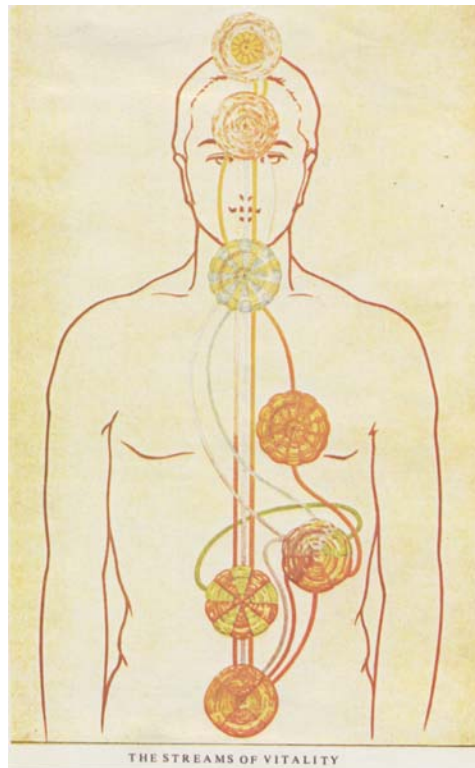
there are many more. David Tansley's representation from *Subtle Body* (1988) is a good example of some of that early mapping. Note that his drawing has only three layers of the "aura," an Inner Aura and an Outer Aura, then one that can be discerned through additional experimentation.



Earlier representations showed the process of evolution in various stages. What started out as two or three layers is now clearly subdivided into 13 layers. The system is steadily growing more complex. We are still part of a great evolutionary story.

Another significant difference is the number and complexity of chakra centers in our system. I grew up with the concept that there were seven chakras, as painted by

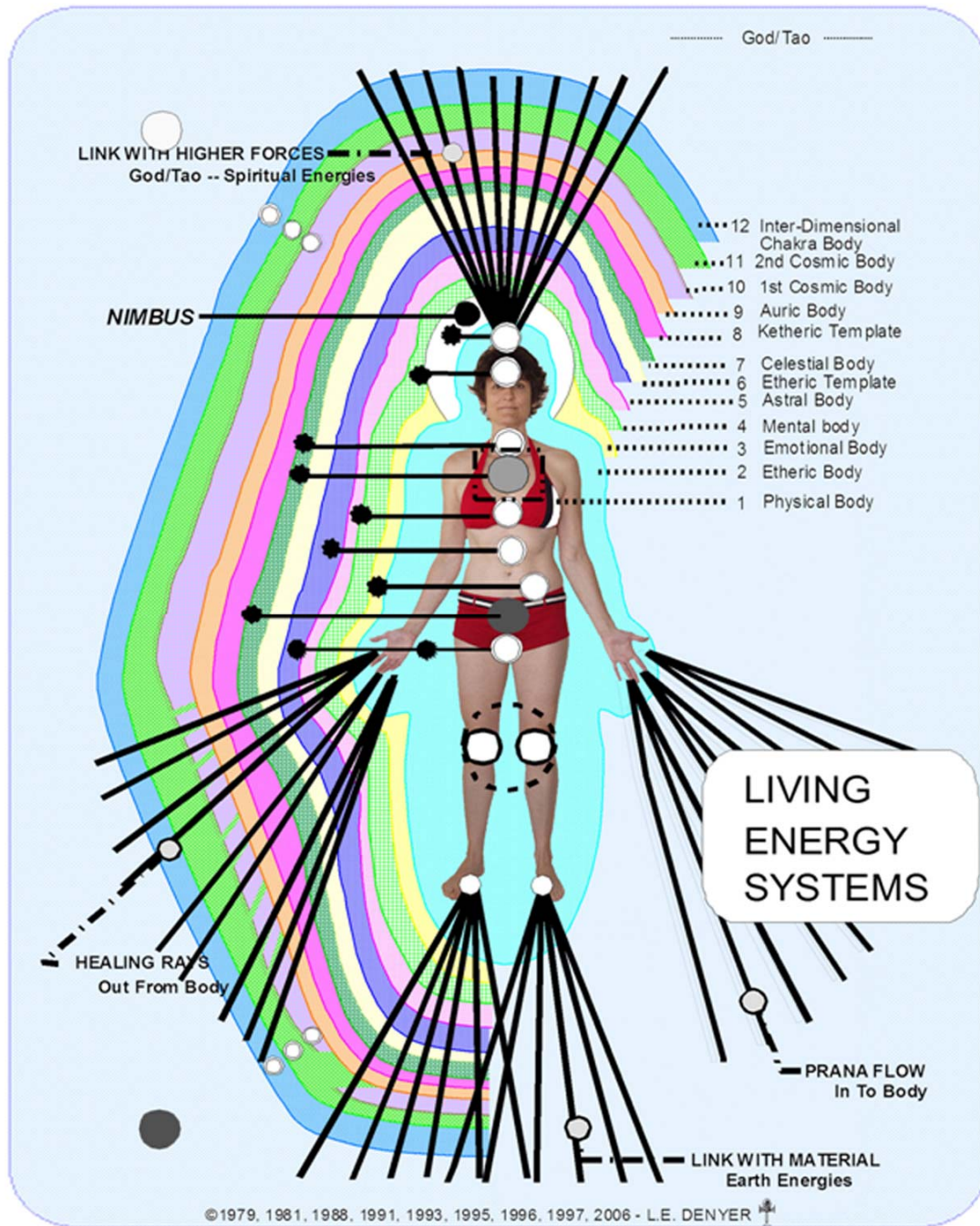
Leadbeater in his *Chakras* book as late as 1979. That is what I understood and what I taught for decades.



Then in the mid 1980's I realized that there were many more than I had previously understood. And in the late 1980's even more systems evolved right before my eyes. Astonishing! I have included an illustration of the complex system of subtle body layers and chakras as I see them today. It is quite possible that there is even more that I have not yet discovered, and I know that we are continuing to evolve.

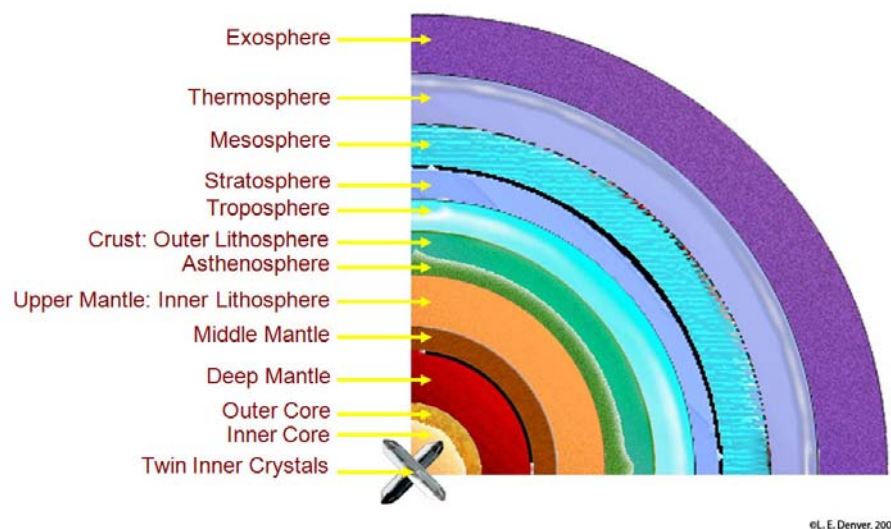
Within the subtle energy bodies are many more subdivision than previously understood. Counting the "God" or universal aspect of who we are as connected beings, there are 13 layers within the system. Layers 10 through 12 have been evolving and strengthening since the early 1990s with more and more information being processed and stored within these layers. I'm certain that these newer layers are highly significant

in our evolutionary process, and bear careful scrutiny. Below is what I believe we see are today in both our chakras and subtle energy body layers. It is much more complex than anything previously depicted. And this is only a portion of the energy systems supporting life and spirit as we know it today.



My understanding is that the way the LES evolves is now directly linked with the changes our planet is undergoing at the same time. The outer layers of the LES, and our physical bodies, are currently going through dynamic changes. They are reorganizing themselves in much the same way that the Earth is shifting and changing her physical structure and atmospheric systems, which are so closely linked to our own LES systems. Earthquakes, floods, hurricanes, tornados, and all of the other activity we see today is part of the planet's quickening evolution. Our bodies are evolving in similar ways at the same time.

Earth's 13 Body Layers



WHERE ARE WE HEADED?

This is a big question. Where are we headed and why are we going there? What additional changes can we anticipate?

Now comes my own speculation about where we are going, based upon my own observations and intuitive work. What came before in this paper is factual. What I discuss next is my own expectation of where we are headed.

The evolution within the outer layers of the LES is helping us evolve our physical bodies in ways never before experienced anywhere, anytime. As a collective, we are attempting to evolve our physical bodies upwards in frequency to match our subtle body frequencies. Science fiction and fantasy portrays evolved civilizations as having left their physical bodies behind and moved into light bodies of pure energy. As I understand it, this is very close to the truth of what has happened on other planets and in other dimensions. Instead of pulling up the energies of physical bodies to live in higher consciousness, their bodies were dissolved and individuals lived in the outer seven layers of their energetic systems. (Interesting, isn't it, how the numbers seven keep occurring again and again?) We are attempting something brand new and wondrous. We are attempting to move our physical and lower subtle body layers into frequencies to match the outer seven layers. It is a grand experiment to be sure.

Since I stand firmly in both the material and esoteric worlds at the same time, observing and chronicling the interactions, my perspective is different than most. I can see the interactions and probable trends on both levels. We are evolving and becoming something new and exciting.

GOING BEYOND WHAT IS, AND SPECULATING WHAT MAY BE...

So, now I'm going to step out onto a very slender limb here and end with part of a message I received from my spiritual advisors and let you make of it what you will. This segment goes beyond my thesis of the evolution of the Living Energy System to date. I give you the words that I believe to be plausible, if strange, about where we are headed. Think of this as sort of an Appendix to the paper, to be ignored or pondered at will.

Here are is the message of my spiritual assistants for your consideration:

“As shown in the evolution of the energy system over the past decades, recognize that evolution is now happening rapidly and with increasing impact. It is important to realize that if you came into your bodies today with the understanding and expectations of people living in the Middle Ages, you would not know how to cope, or how to feel. Every system works so differently now that you simply would not be comfortable or connected to your physical partners.

Many different religious prophecies have spoken to this coming change. They have spoken of the rapture wherein those of pure heart will rise and live forever in a Heaven on Earth. There is more truth to those prophecies than we realize, it will just be accomplished in a different manner than anticipated.

In cultures across time, space, dimensions and vortexes, each civilization that chose to move to the higher awareness level, or rapture state, has done it in purely energetic form, leaving their physical bodies behind. They just did not have the will, capacity, or wisdom to take their living bodies with them into the heightened state. But your planet and its soul bodies have been working for some time now, over millennia, to evolve and adjust the mechanisms within their bodies to prepare for the new options. Souls on the Earth know, at a higher consciousness level, that the shift is actually part of this grand opportunity and experiment to begin a totally new type of civilization, with all of its inherent possibilities and challenges. Many know that it will be beyond their ability to meet this challenge, and will not make the shift, and fear it. Yet there are many who are ready and willing to attempt it.

The planet is getting ready for this shift as well, as your scientists could attest. She is a living, incarnate soul going through her own evolution. Gaia is in process of

shifting her energies and moving into a new type of interaction with her cell bodies (living beings). She is rearranging her structure and functions in primordial and important ways. She is struggling through it all, as seen by earthquakes, floods, and other “disasters” happening throughout your world. Those are a result of her growth spurts and significant changes necessary to become a home for a new level of life within and upon her body.

The ability to rise up, while still in physical form, and live at the frequency of soul consciousness is now possible. The eternal soul entity and the temporal body partner can share the same vibration frequencies, allowing brand new ways of thinking, knowing, and being. The partnership will be more equal and glorious. What people now experience in altered states will be commonplace. What can be accomplished in the new forms of “altered” states is as yet unimaginable. Humans will walk the Earth in angelic, almost demi-god, form. The wondrous possibilities are enormous. “

RESOURCES

- Leadbeater, G. W. *The Chakras*. The Theosophical Publishing House: Wheaton, IL. 1979. ISBN# 0-8356-7016-3.
- Leadbeater, C. W. *Man Visible and Invisible*. Theosophical Publishing House: Wheaton, IL. 1980. ISBN# 0-8356-0311-3.
- Prophet, Elizabeth Clare. *Djwal Kul Intermediate Studies of the Human Aura*. Summit University Press: Colorado Springs, CO. 1974. ISBN# 0-916766-13-6.
- Tansley, David V. *Subtle Body*. Thames and Hudson: NY, NY. 1988. LC# 83-51566.
- Tiller, William A., Ph.D. "Radionics, Radiesthesia and Physics." *The Varieties of Healing Experience*. The Academy of Parapsychology and Medicine: Los Altos, CA. 1972.