

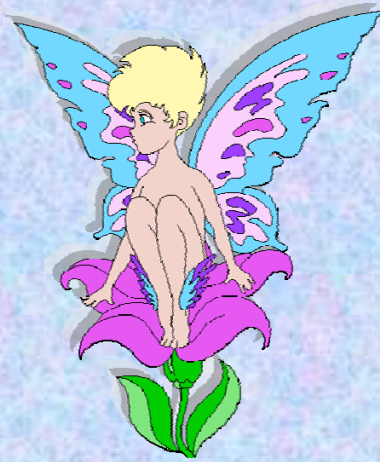
Take Wing!

*A study of our
Ethereic Frequency
Modulation System*

Laverne E. Denyer



Daniel B. Holeman



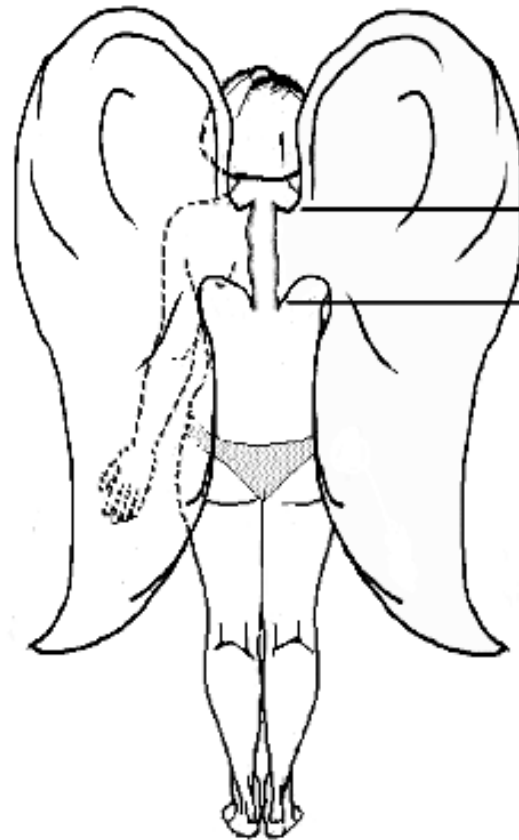
*Have you ever felt you could fly?
Or that you wish you had wings?*



The truth is...
You do!

Soul Wings

Each wing attaches to the body just to the side of the spine/Kundalini



The same as the Master Spiritual Will Chakra

7th Cervical

9th Thoracic

The same as the Solar Plexus Chakra

Figure 12-1

©2003 - L. E. Denyer

Energetic

wings

help us keep our energetic balance and facilitate astral travel



Structure



Structure:

- Etheric in nature — not physical

- Purpose:

— stabilize or alter our harmonic and electro-magnetic frequencies



Compound Structure

Soul Wing Feather

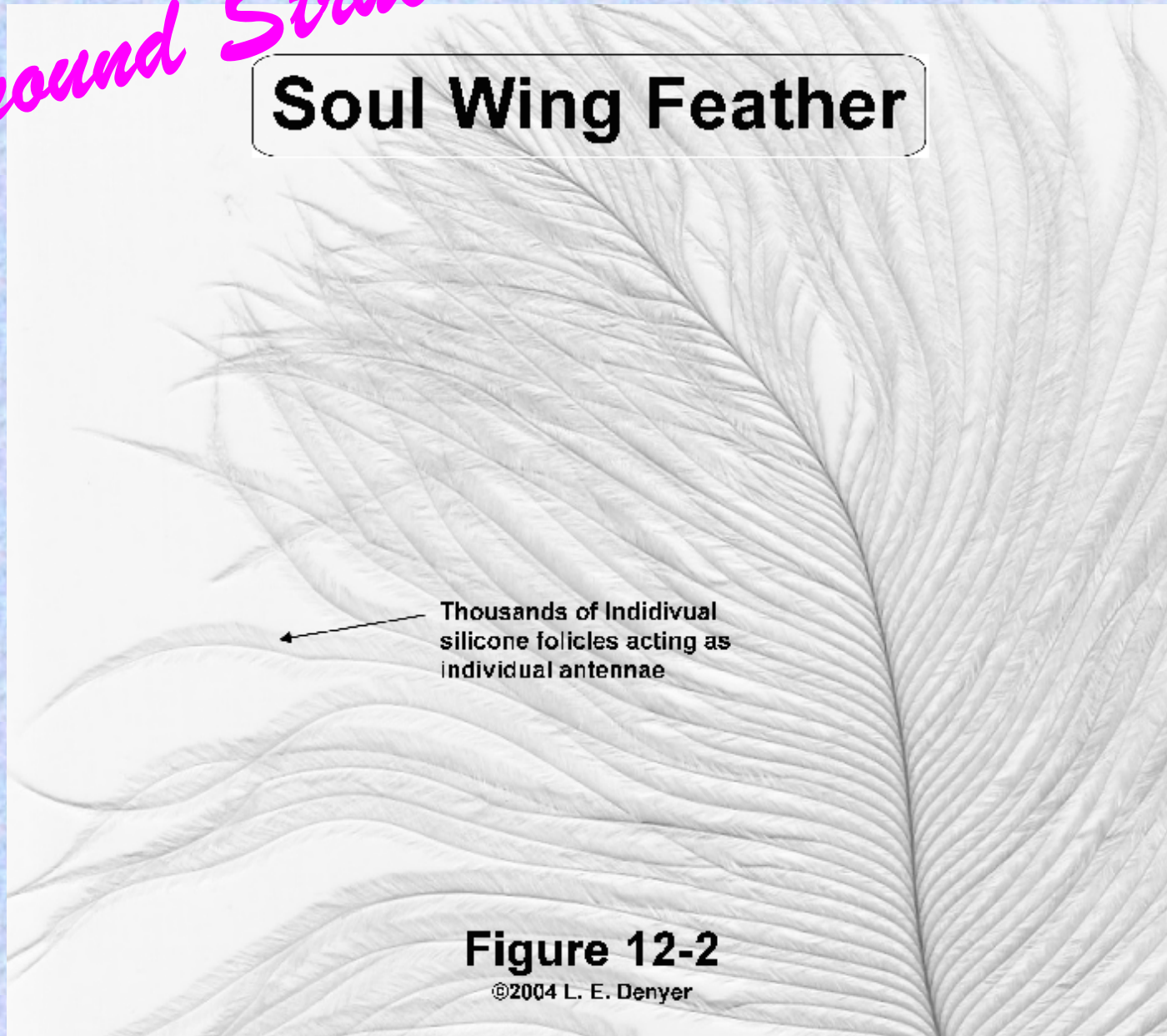


Figure 12-2

©2004 L. E. Denyer

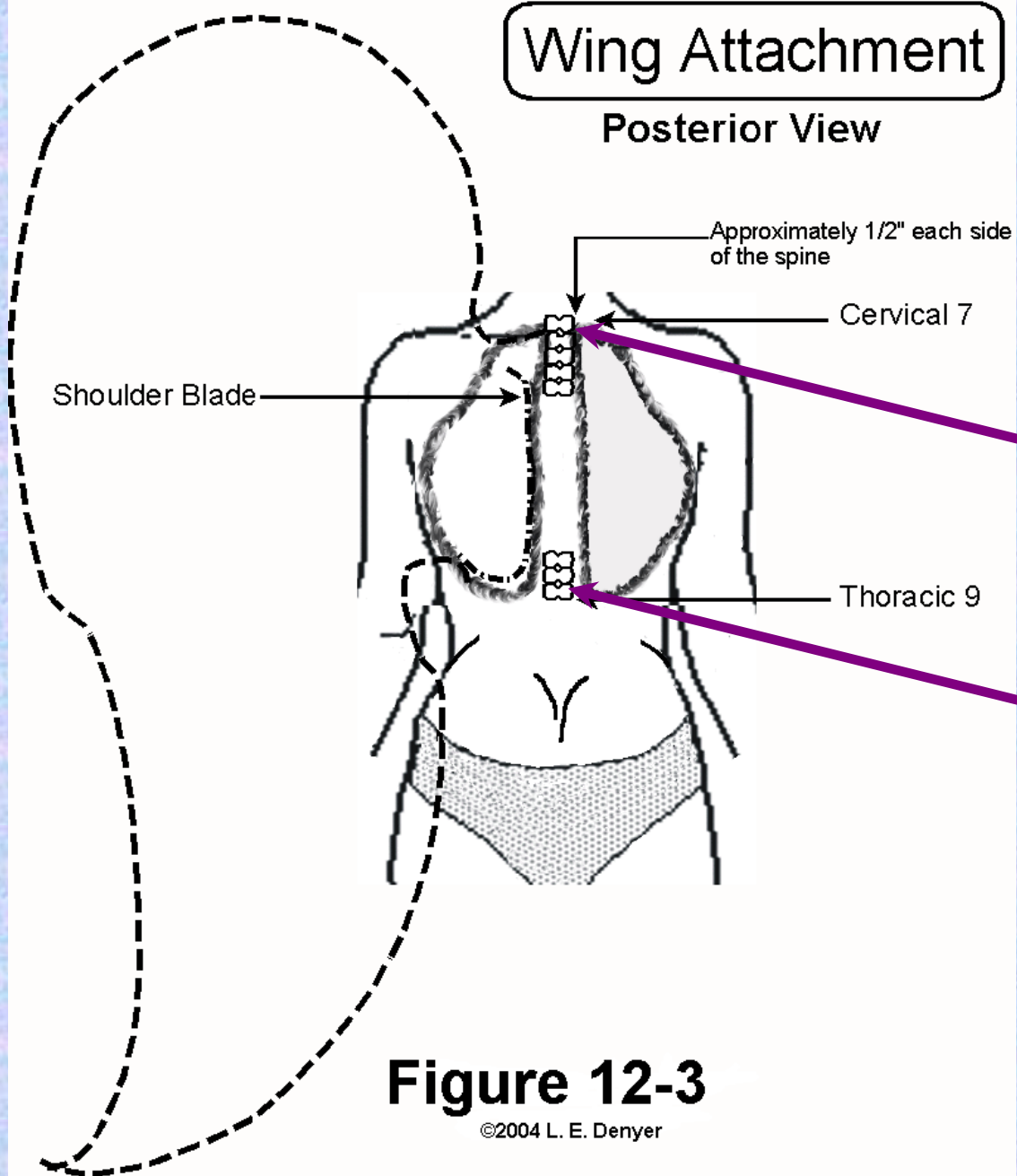
Physical Description

- Attached to upper back overlaying shoulder blades
- Each side of spinal column
 - 1/2 inch gap
- 7th cervical — MSW
- 7^o 9th thoracic — just above MPW



Wing Attachment

Posterior View



Physical Location

Figure 12-3

©2004 L. E. Denyer

WILL ASPECT

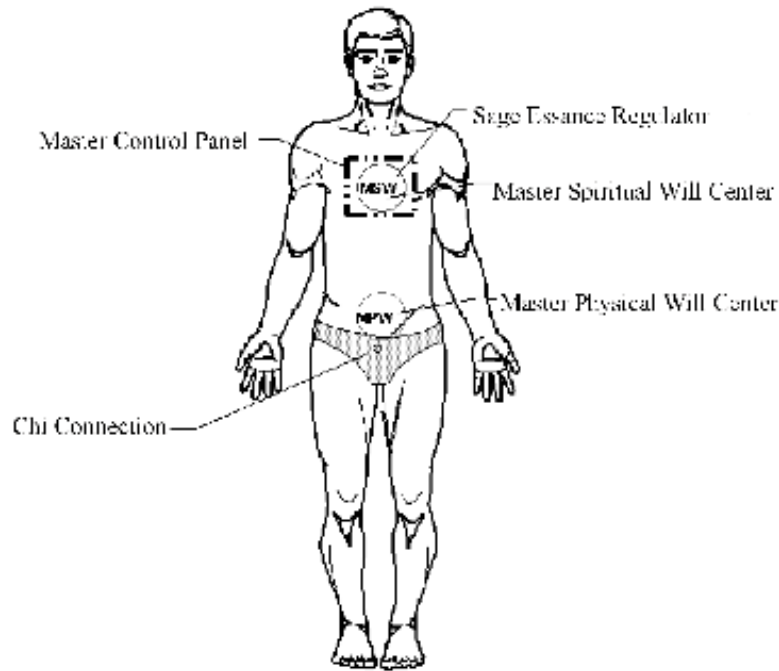


Figure 5-11

©1981, 1993, 1995 - L.E. DENYER

CHAKRA ALIGNMENT - 3D

- 4. CROWN
No Spinal Connection
Pineal Gland (A)
- 5. BROW
C1 – 1st Cervical
Pituitary Gland (B)
- 6. THROAT
C3 – 3rd Cervical
Thyroid & Parathyroid (C)

MASTER CONTROL PANEL

- MSW MASTER SPIRITUAL
C7 – 7th Cervical
Thymus (D)

- 7. HEART
T2 – 2nd Thoracic
Heart (E)

- 3. SOLAR PLEXUS
T9 – 9th Thoracic
Adrenals (F)

- 2. NAVEL/SPLEEN
T9 – 8th Thoracic
Pancreas & Spleen (G)

- MPW: MASTER PHYSICAL WILL
L1 – 1st Lumbar
Colon (H)

CHI

- 1. BASE/ROOT
L3 – 3rd Lumbar
Gonads
(female) Ovaries (J)
(male) Testes (K)

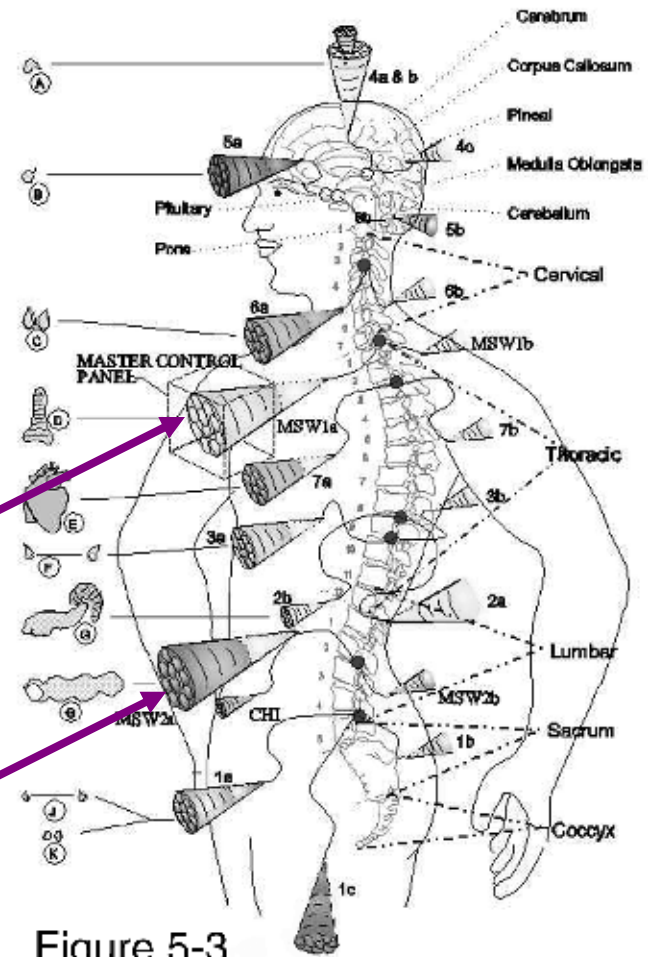


Figure 5-3

©1981, 1988, 1991, 1993, 1995 - L.E. DENYER

Location

- Provides balance between maximum freedom of movement and stability of structure
- Reduces impact on spinal column and Kundalini flow
- Actual size of wing structure varies



The Wing Feathers

- Have the energetic structure of silicon
 - Chemically represented as **Si**
 - A metalloid
- 7th most abundant element in universe
- 2nd most abundant element on earth



Silica (Si)

- Basic component of sand and quartz crystals
- Used in manufacturing of glass
- Crystalline form is used in computer microchips



Benefits of Silica

- Extremely efficient
 - Power conductor
 - Storage source
 - Energy generator
- Enhances ability to modulate our energies as necessary

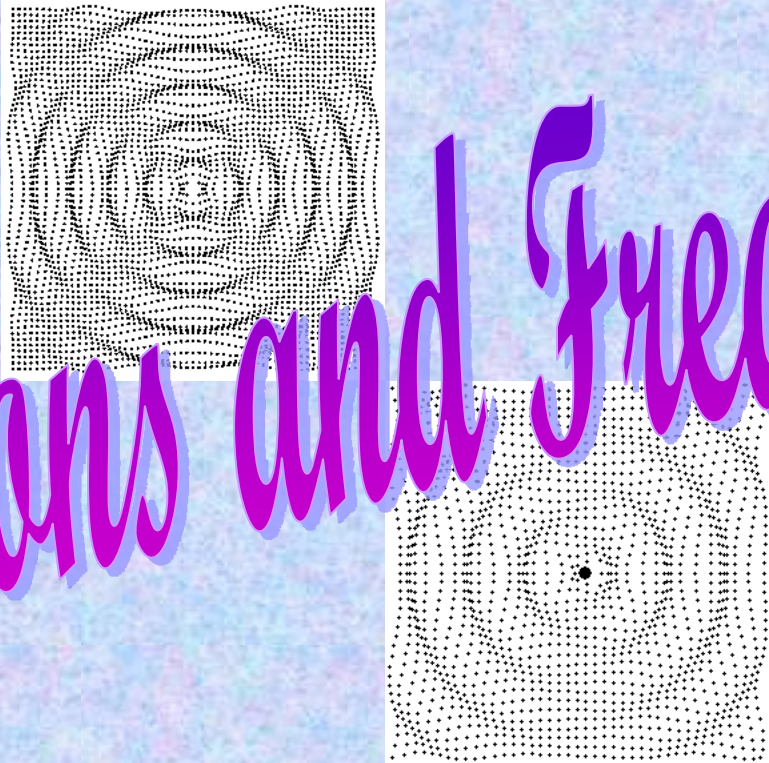


Silicon is strong

- *Used in steel and various building materials*
- *Soul Wings use that strength for durability*



Vibrations and Frequencies

The image features two square panels, one above the other, each containing a grid of small black dots. In the upper panel, the dots are arranged in a pattern that forms a circular shape, with the density of dots increasing towards the center, creating a sense of depth and vibration. The lower panel shows a similar grid of dots, but with a single, prominent black dot located at the center, which also appears to be part of a larger, faint circular arrangement.

Ability to modify frequencies

- Fluttering vibrations of wings help alter harmonics
 - For healing and other extra-sensory abilities
- Resulting vibrations can adjust harmonic and electro-magnetic frequencies of system



Fluttering Interacts with Kundalini

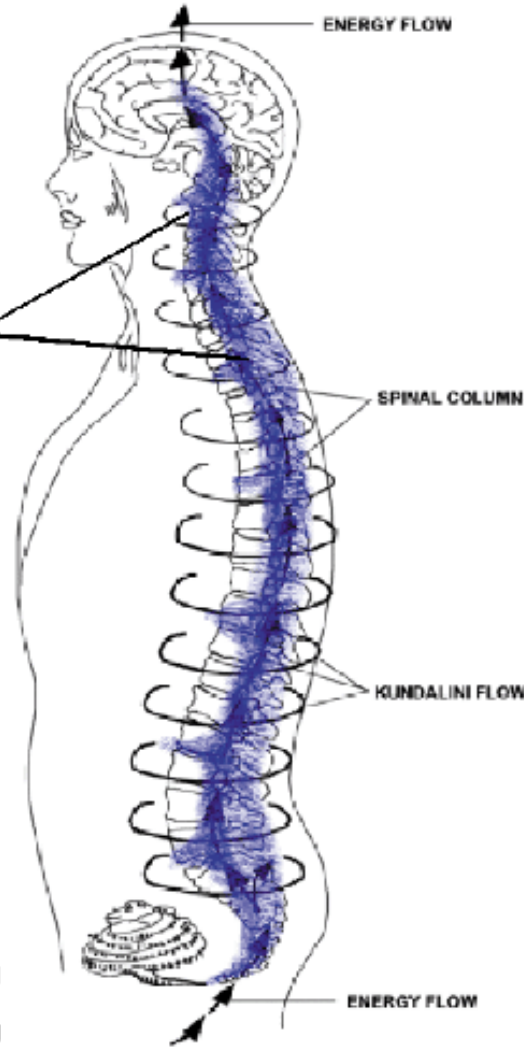
- Modulates amount of flow
 - Strengthen
 - Help Kundalini Governor reduce flow



**KUNDALINI
GOVERNOR
--SIDE--**



Kundalini
Governor



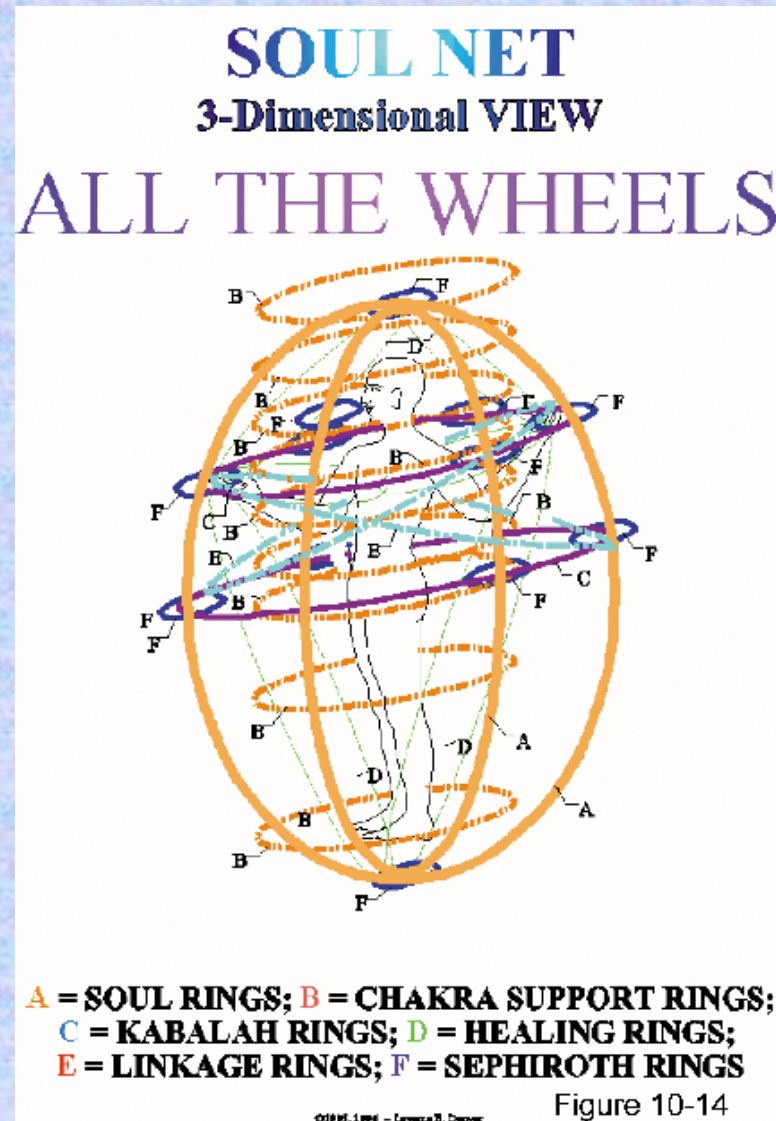
The energy of the Kundalini flow is partially encased around the back and sides by a device called the *Kundalini Governor* which monitors and controls the activity of the Kundalini through interaction with the Subtle Bodies (as described in Chapter 7).

As a governor device on a vehicle to keep it from exceeding a predetermined speed, the Kundalini Governor determines the level of energy activated along the Kundalini Energy Circuit

©Laverne E. Denyer -- 2001

Figure 6-5

Enhances Soul Net Patterns



*Harmonic amplifier and
modulator of the highest power*





Ability to Fly



Astral Travel

- Provides the ability to astral travel
 - Not direct flight — lift & drag
 - Energetic pattern



Protection



Our wings provide a safe haven

- *Extend forward and around our bodies*
- *Create a small private space*
 - *Shielding from external forces*
 - *Place of reflection and review*





Colors & Music of the Spheres



Out Of
ORDER

Results of Damage



Wings can be damaged

- *Imbalances*

- *Emotions*

- *Thinking*

- *Creates disharmony*

- *Can impede proper functioning*



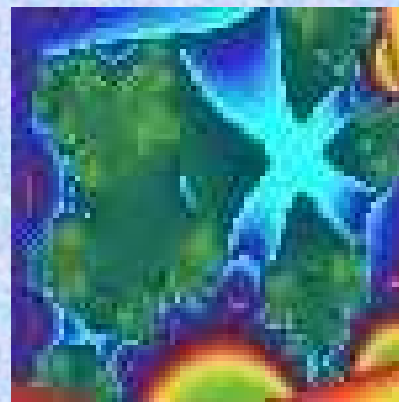


Generally Temporary
Can be permanent damage





Wisdom Self





*Catalyst for higher spiritual
connection*



Take Wing – by Laverne E. Denyer

Take charge of your
own interaction
with your Soul and
take Wing!

